

Welfare Outcomes of Migration of Low-income Earners from Metropolitan to Non-metropolitan Australia

Peter Murphy

on behalf of the

UNSW and Adelaide University Research Team:

Nancy Marshall, Graeme Hugo, Ian Burnley

ACKNOWLEDGEMENTS

This material was produced with funding from the Commonwealth of Australia and the Australian States and Territories. AHURI gratefully acknowledges the financial and other support it has received from the Commonwealth, State and Territory governments, without which this work would not have been possible.

DISCLAIMER

AHURI Ltd is an independent, non-political body which has supported this project as part of its programme of research into housing and urban development, which it hopes will be of value to policy-makers, researchers, industry and communities. The opinions in this publication reflect the views of the authors and do not necessarily reflect those of AHURI Ltd, its Board or its funding organisations. No responsibility is accepted by AHURI Ltd or its Board or its funders for the accuracy or omission of any statement, opinion, advice or information in this publication

Presentation Content



- Background
- Aims
- Methodology
- Mobility of income-support recipients
- Selected Survey Results
- Conclusion

Background

- People leaving larger cities to non-metropolitan areas (aspect of *counterurbanisation* or *population turnaround* processes)
- Sydney: every year for 30 years, net internal migration loss to other parts of NSW and Australia
- Other capital cities have had net gains through internal migration, especially the sunbelt capitals – Brisbane and Perth
- Low-income households are a feature of the outflow
- Some suggest that people are ‘forced out’ of Sydney (especially) by inflated housing prices and by the number of immigrants (nexus)
- Social polarisation from economic restructuring may also be a factor

Aims

To test the assumption that the bias towards lower income earners in the internal migration outflows from Sydney and Adelaide means:

1. Housing affordability key driver of outflow
2. Net loss in welfare results

Methodology

- Analysis of DFACS' Longitudinal Data Set of 'movers' from metro to non-metro postcodes and vice versa for all States and Territories
- Self-administered, mailback questionnaires to 7000 movers from Sydney and Adelaide to non-metro NSW and SA in a one year period
 - Stratified by DFACS income support recipient type
 - 4,900 Sydney and 2,100 Adelaide
 - 23% overall response rate (1496 responses) (one shot mail-out)

Metro to Non-Metro Moves by I-S Recipients over a 1 Year Period

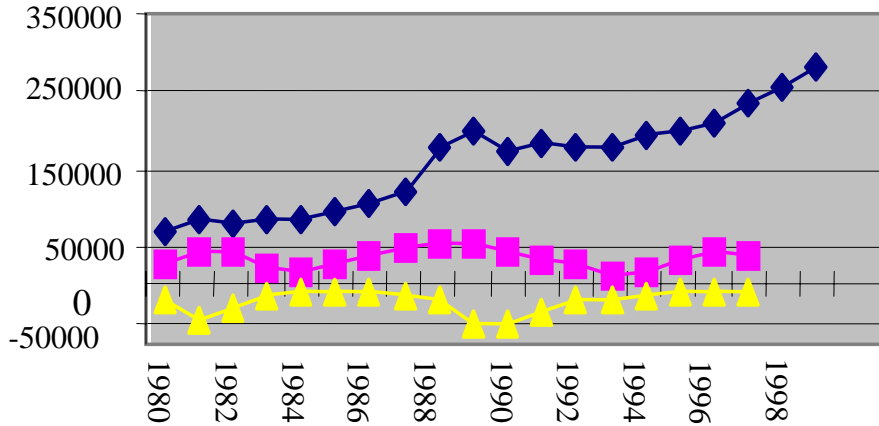
Income Support Payment Type	ACT	NSW	NT	QLD	SA	TAS	VIC	WA
Unemployed	96	4,868	700	5,030	1,884	680	4,805	3,039
Unemployed Youth	16	1,000	122	1,422	485	233	1,009	811
Single Parents	112	3,238	252	3,075	1,201	356	3,134	1,903
Disabled	52	2,868	166	2,525	1,131	294	2,729	1,369
Aged Pension	78	4,050	86	2,341	888	195	3,566	1,531
Totals	354	16,128	1326	14,393	5,680	1,758	15,243	8,653

Net Moves of I-S Recipients to Non-Metro Areas over a 1 Year Period

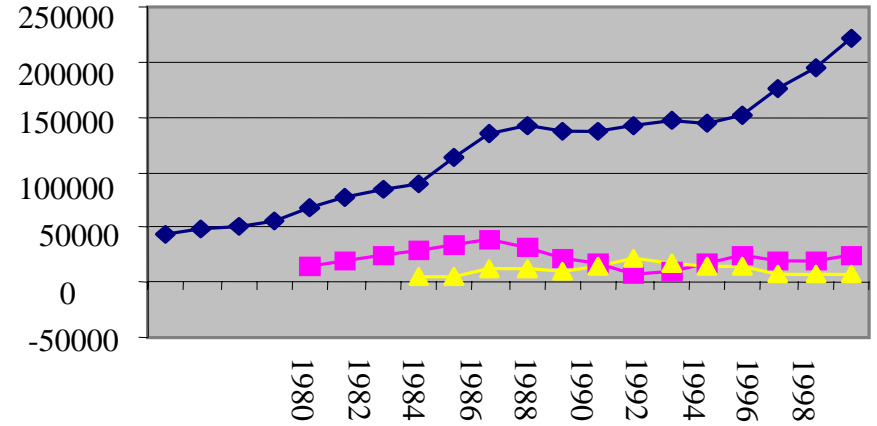
	ACT	NSW	NT	QLD	SA	TAS	VIC	WA
Unemployed	-60	855	181	438	-287	31	366	53
Youth Unemployed	-31	126	15	13	-232	5	-164	-19
Single Parents	10	676	26	331	-136	-38	308	116
Disabled	-17	805	-1	483	139	-64	693	243
Aged Pension	9	2,128	19	816	62	-41	1,236	452
Totals	-89	4,590	240	2,081	-454	-107	2,439	845

Immigration, Net Internal Migration and House Prices: Sydney, Melbourne, Brisbane and Perth, 1980-1999

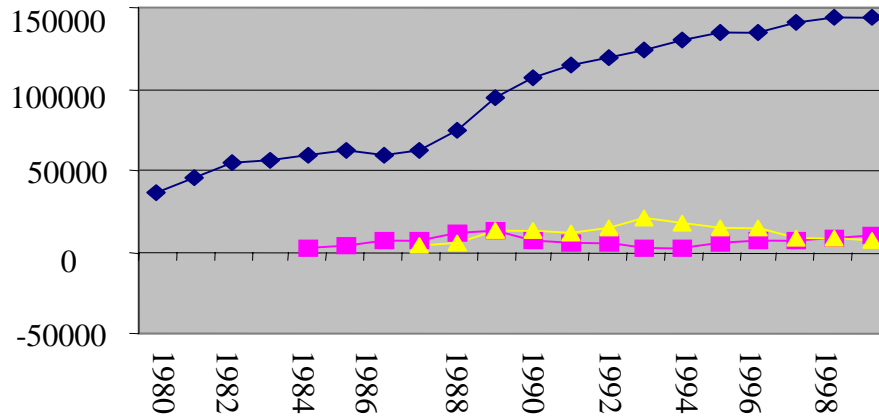
SYDNEY



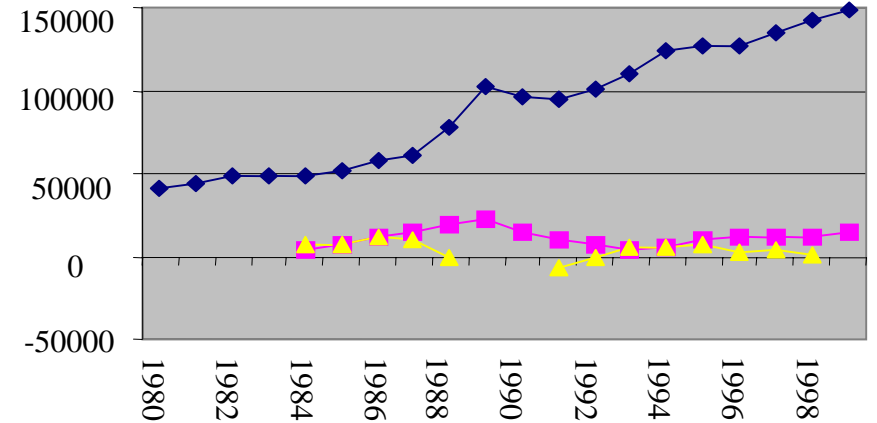
MELBOURNE



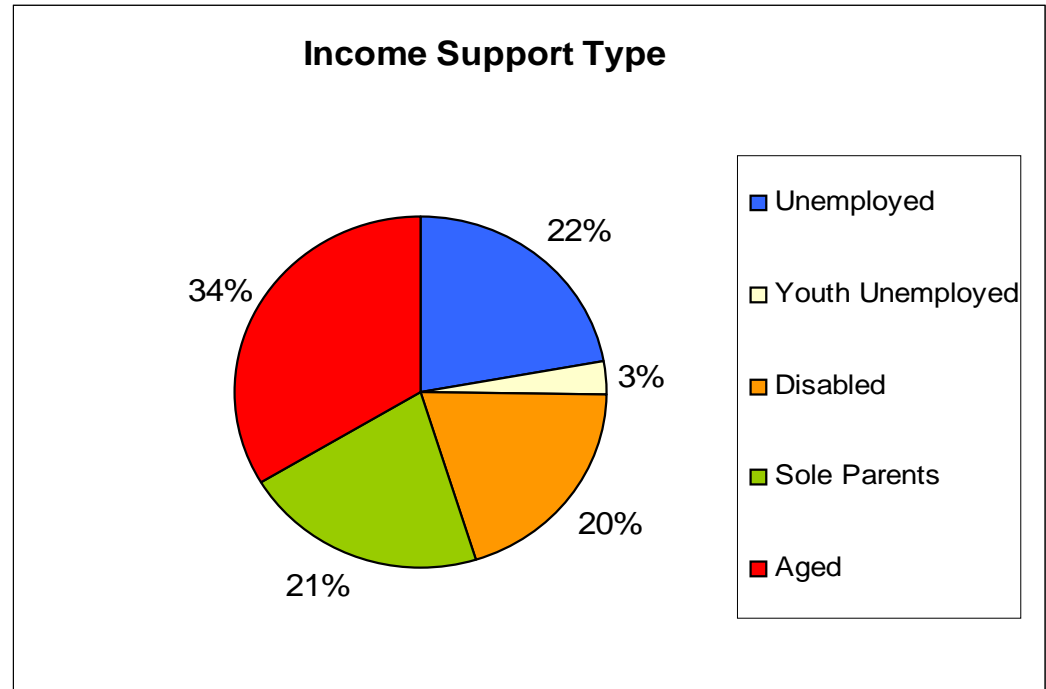
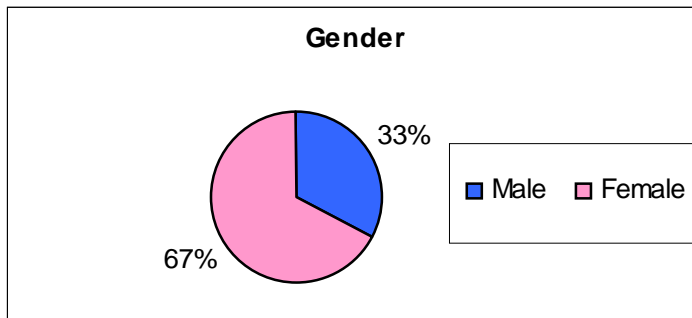
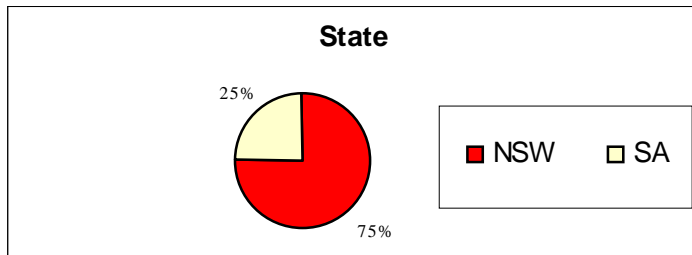
BRISBANE



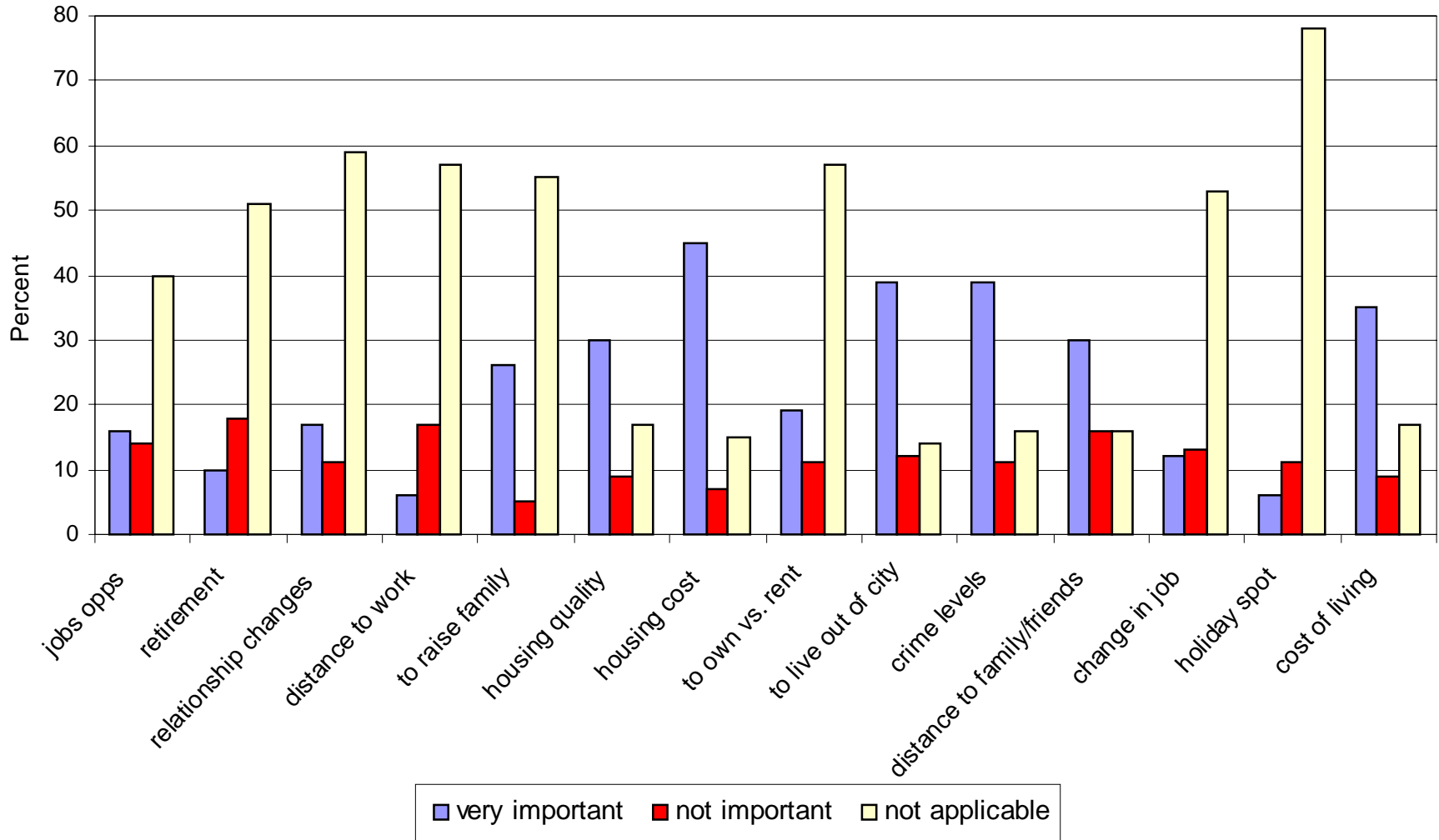
PERTH



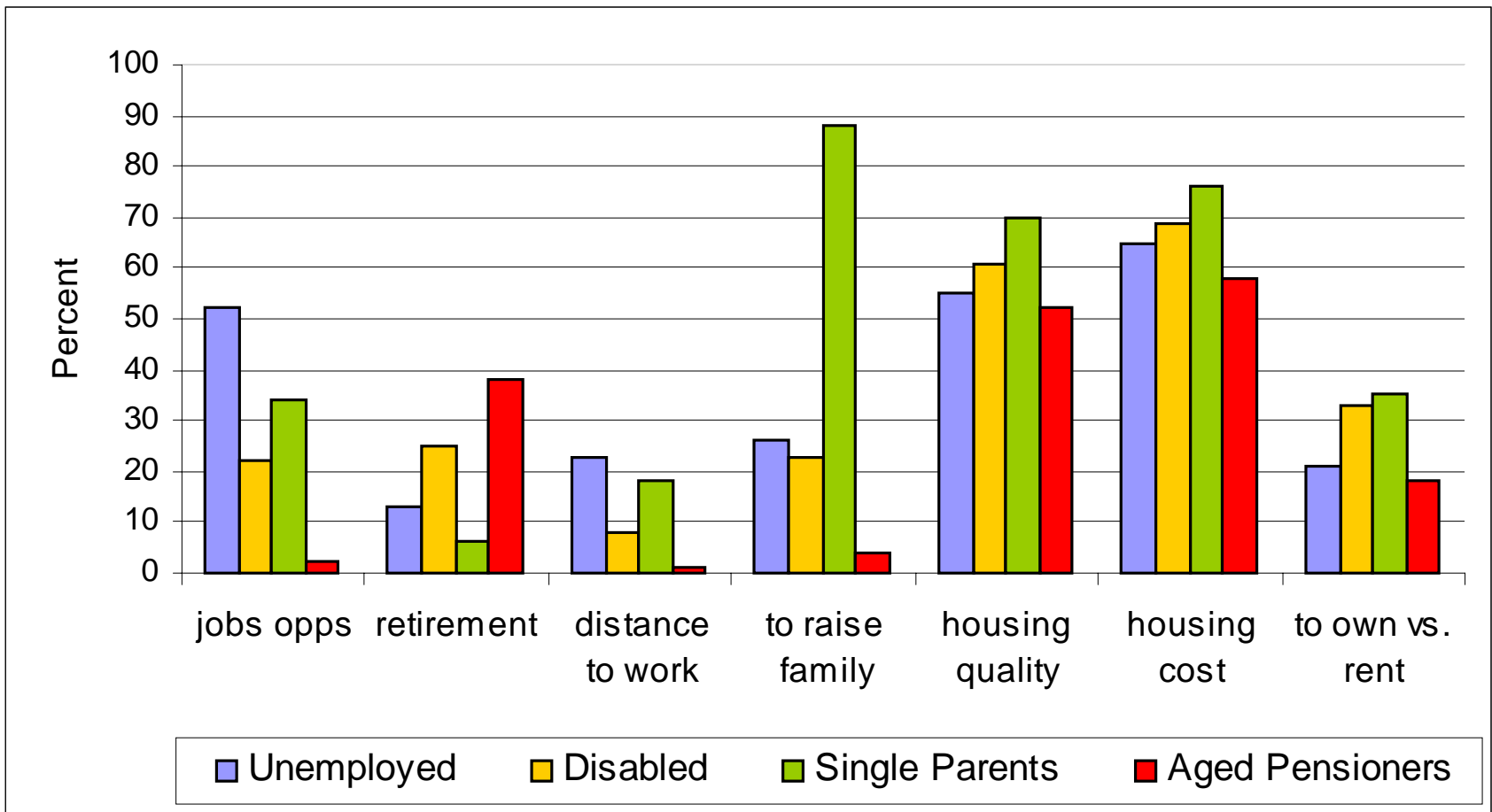
Survey Respondents



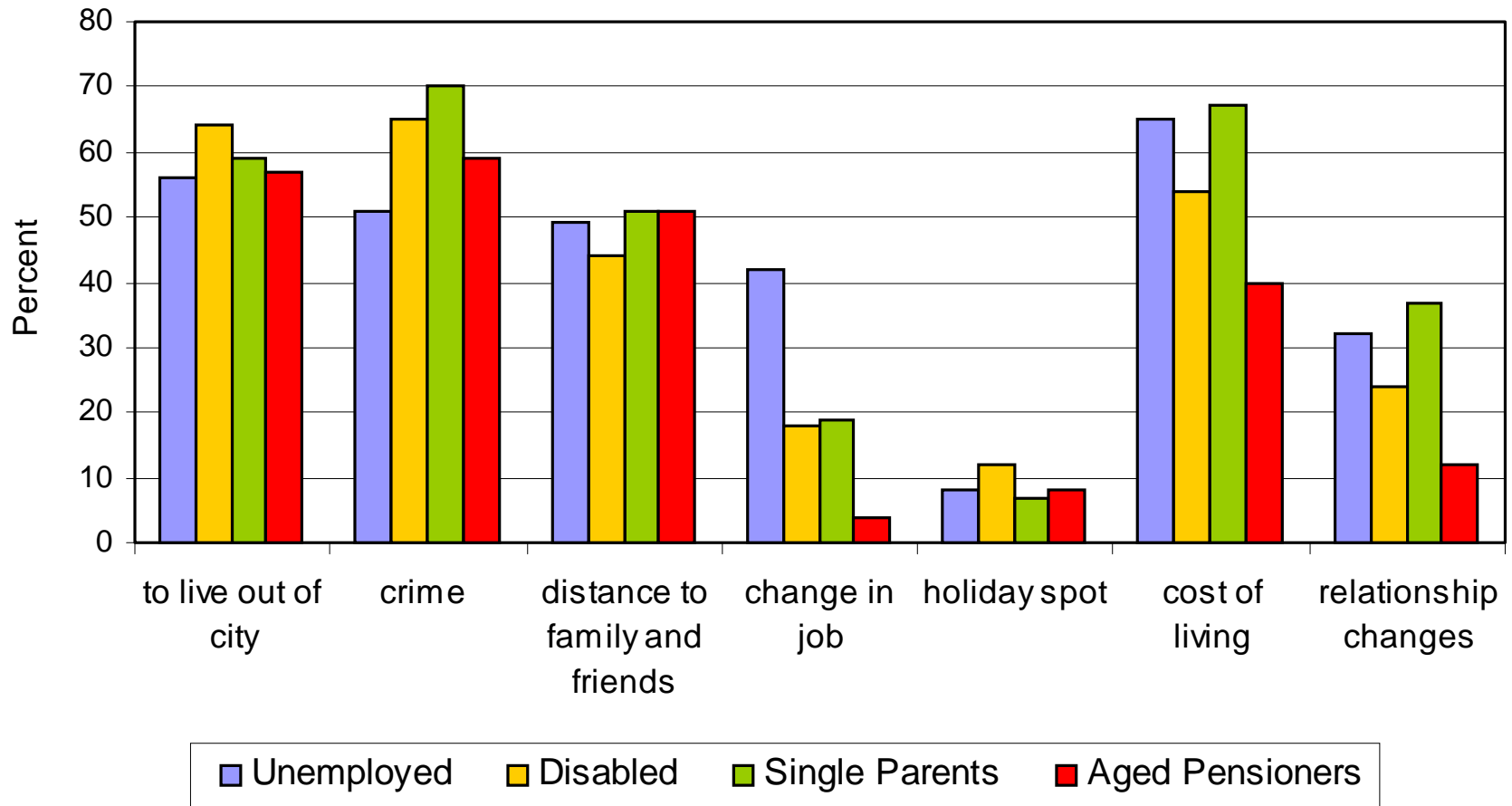
Relocation Factors: Total I-S Recipients



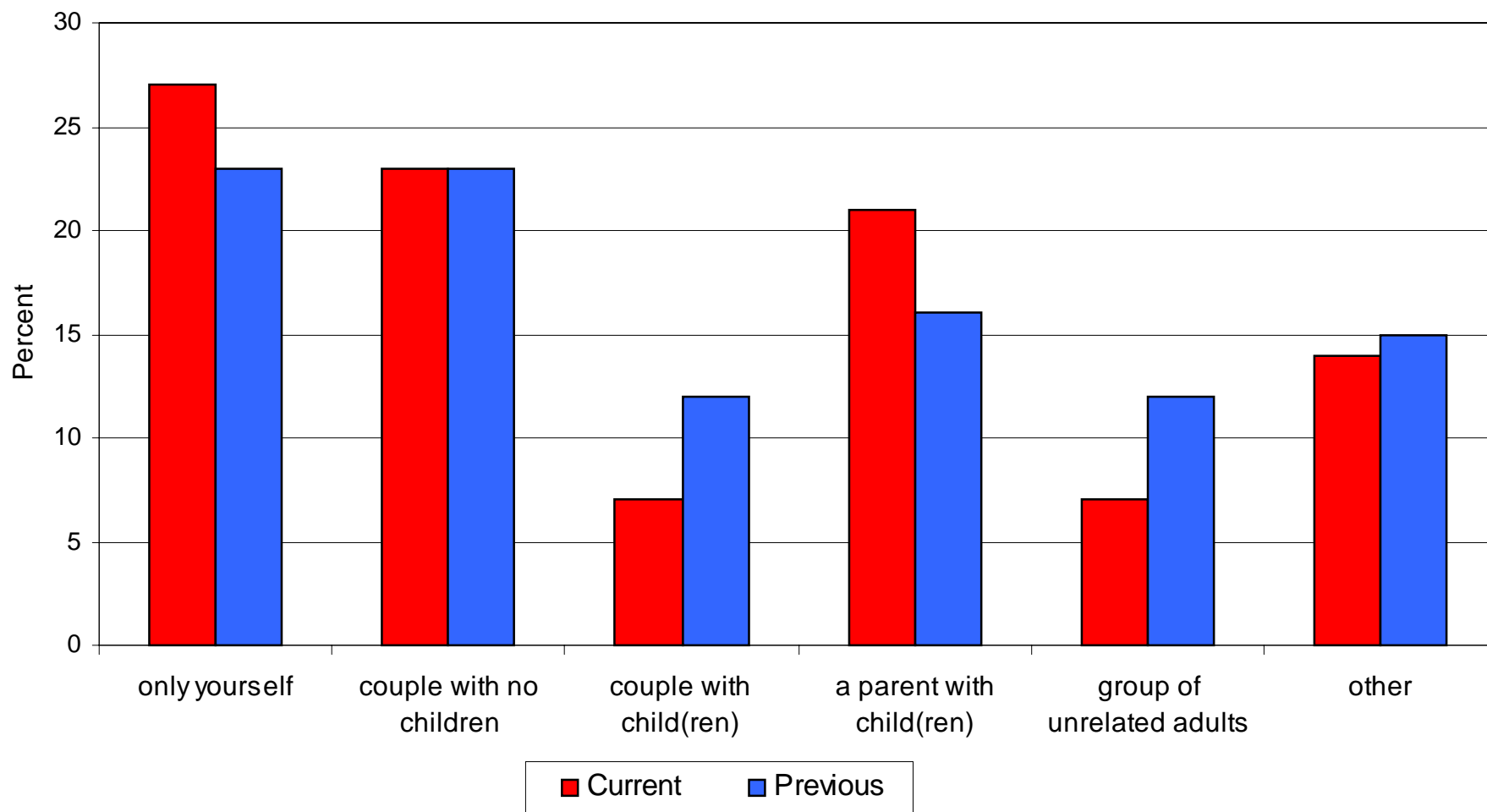
Relocation Factors: by type of I-S Recipient A.



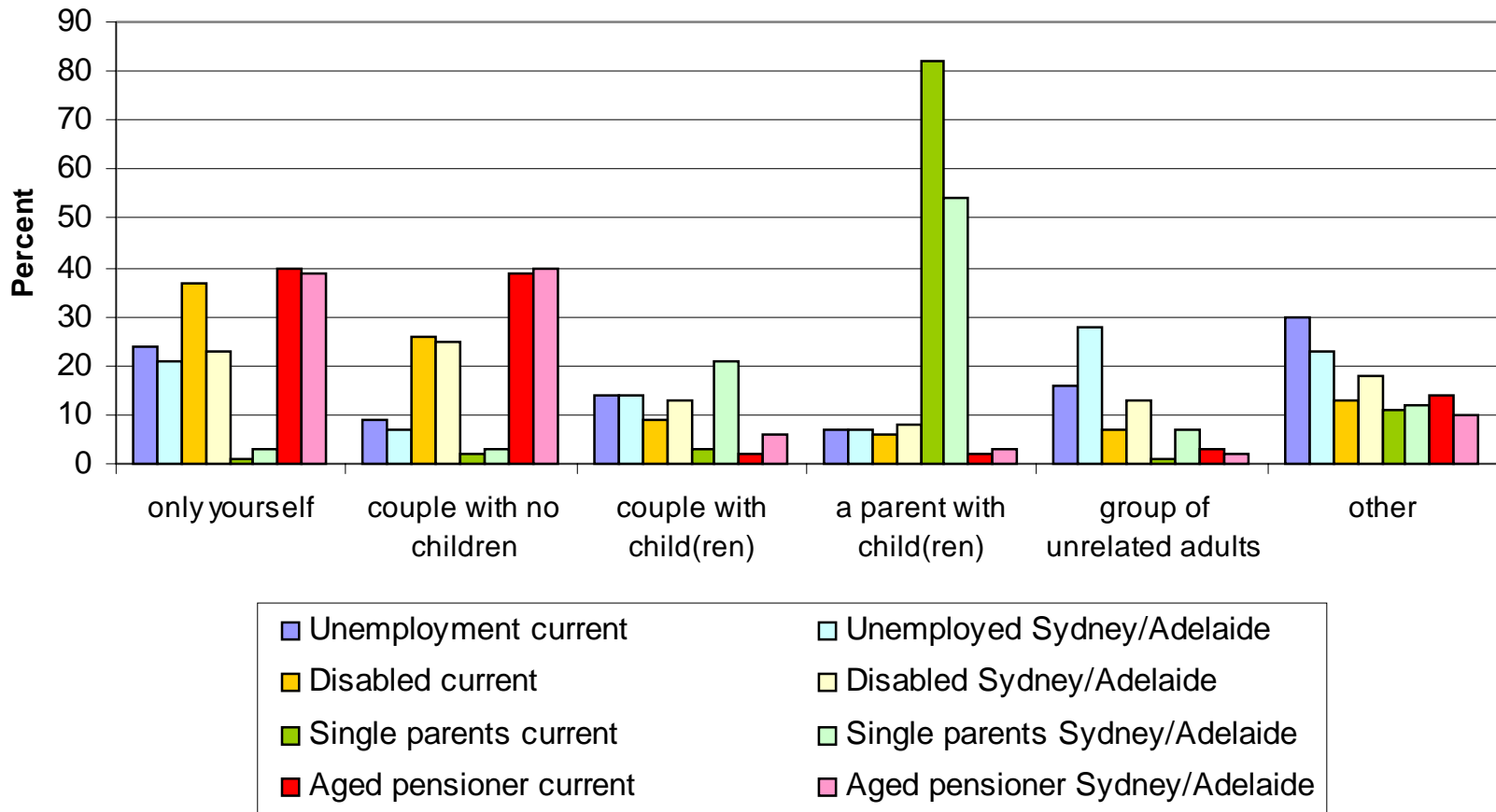
Relocation Factors: by type of I-S Recipient B



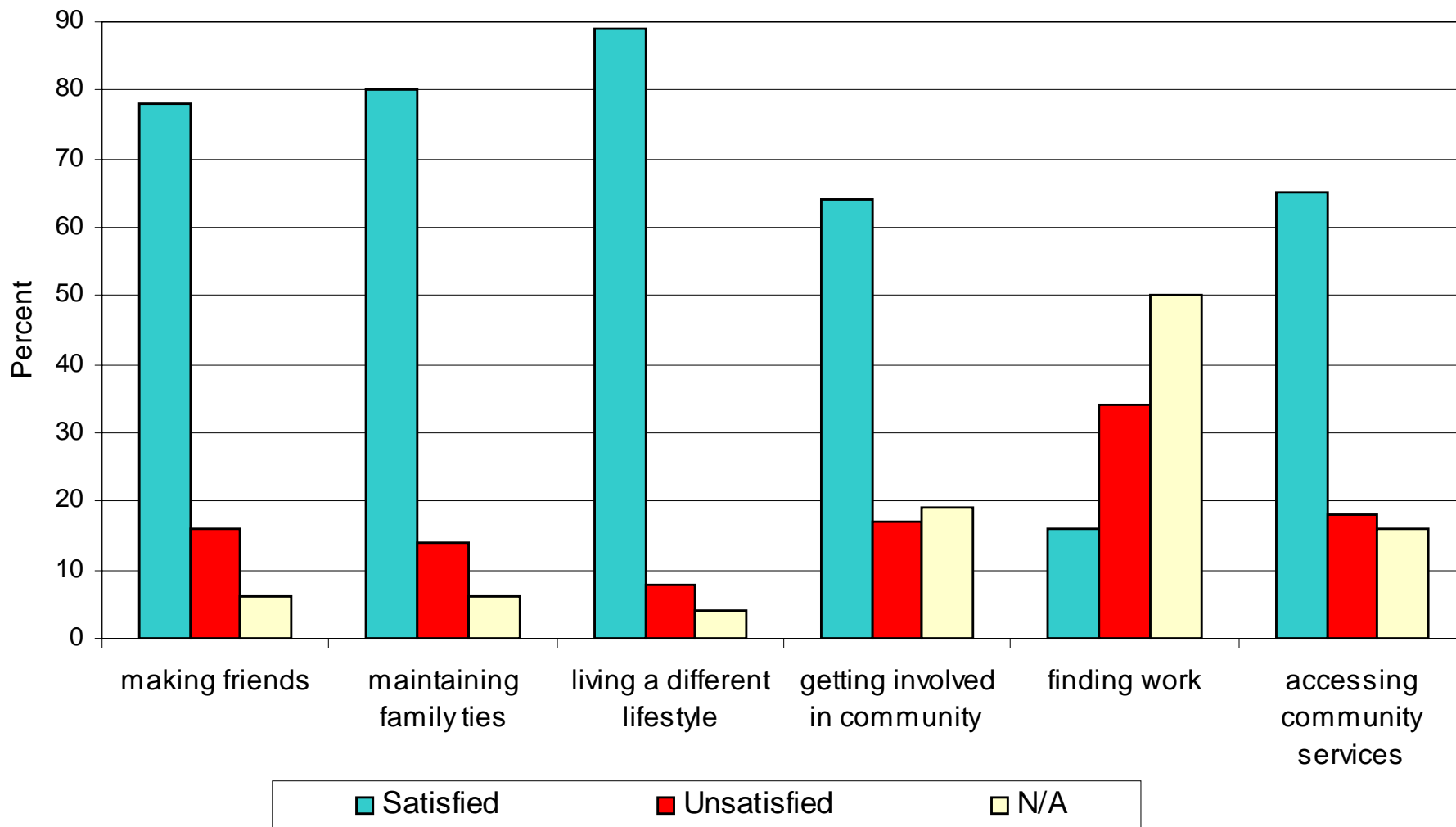
Household Type: Pre and Post Relocation: Total I-S Recipients



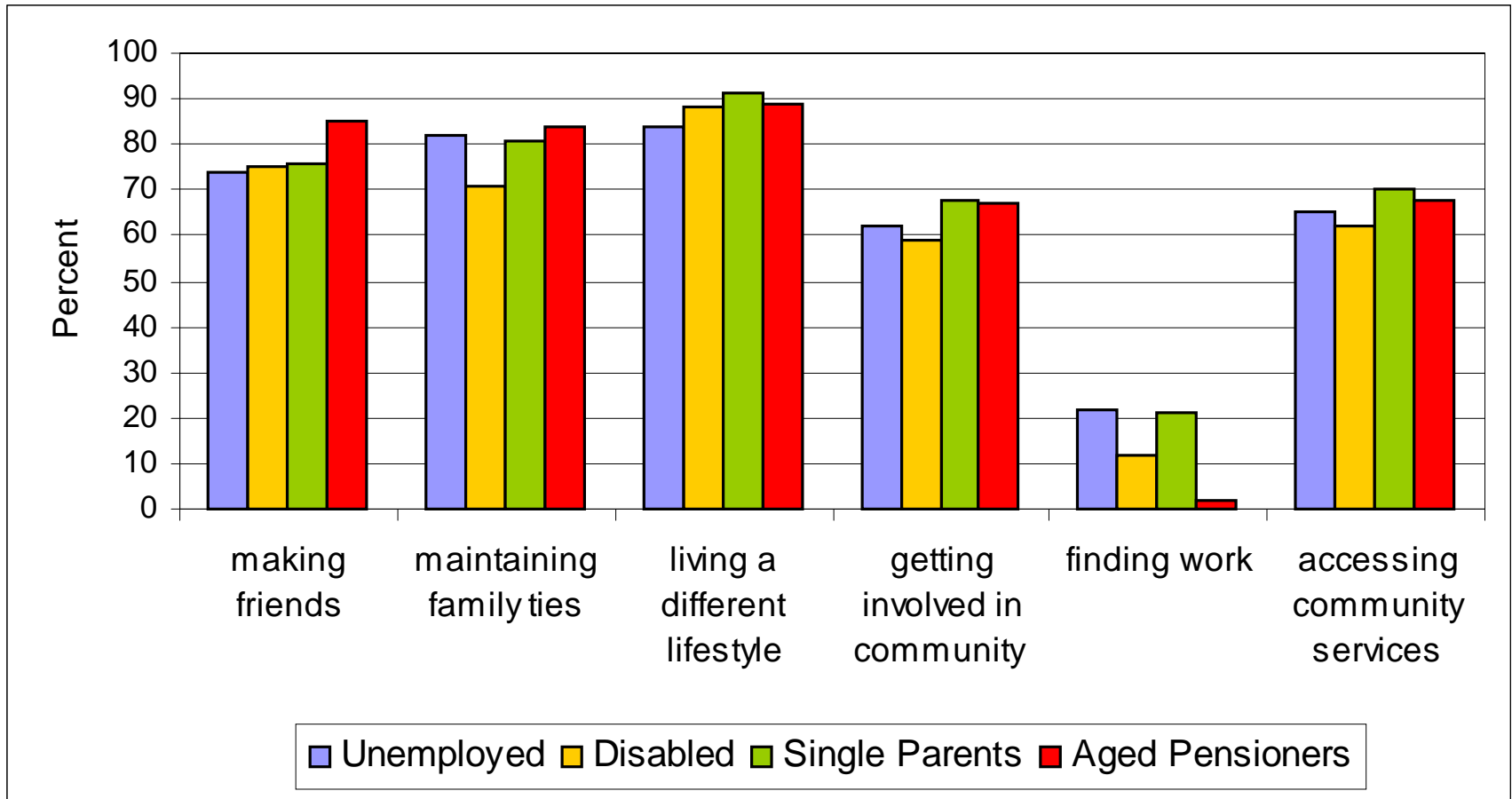
Household Type: Pre and Post Relocation: I-S Recipient Type



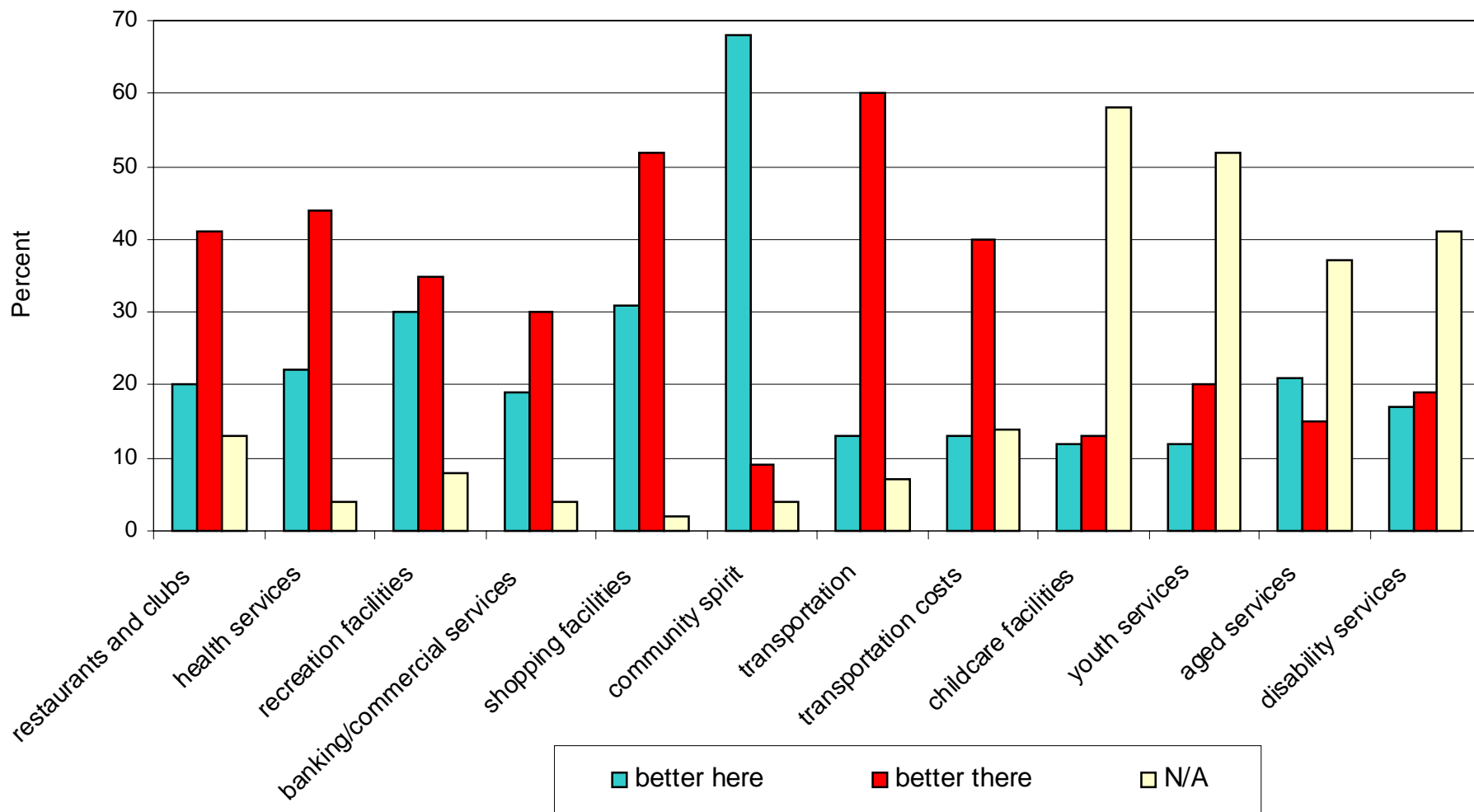
Lifestyle Satisfaction Indicators Post Relocation: Total I-S Recipients



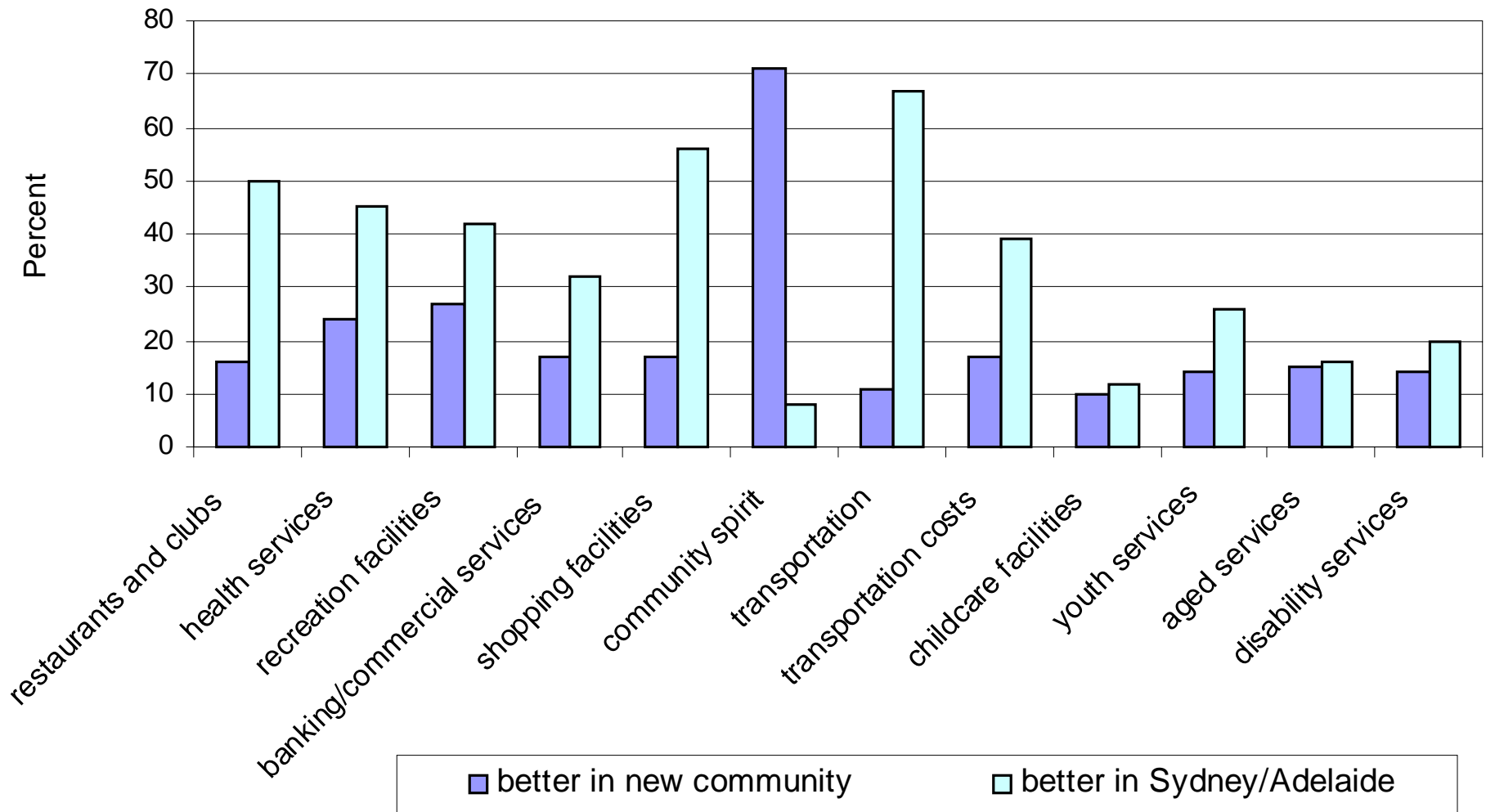
Lifestyle Satisfaction Indicators Post Relocation: I-S Recipient Type



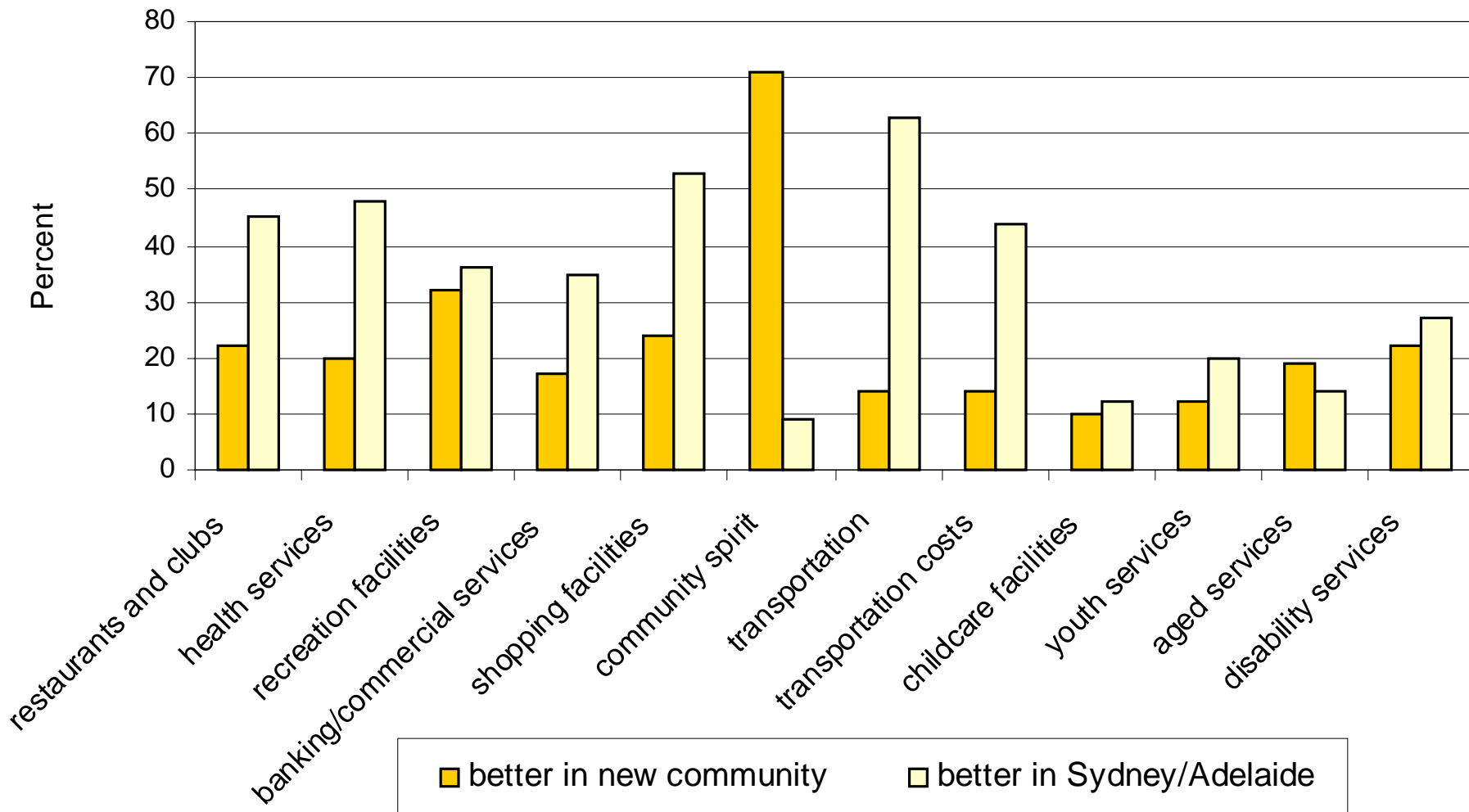
Place Satisfaction After Relocation: Total I-S Recipients



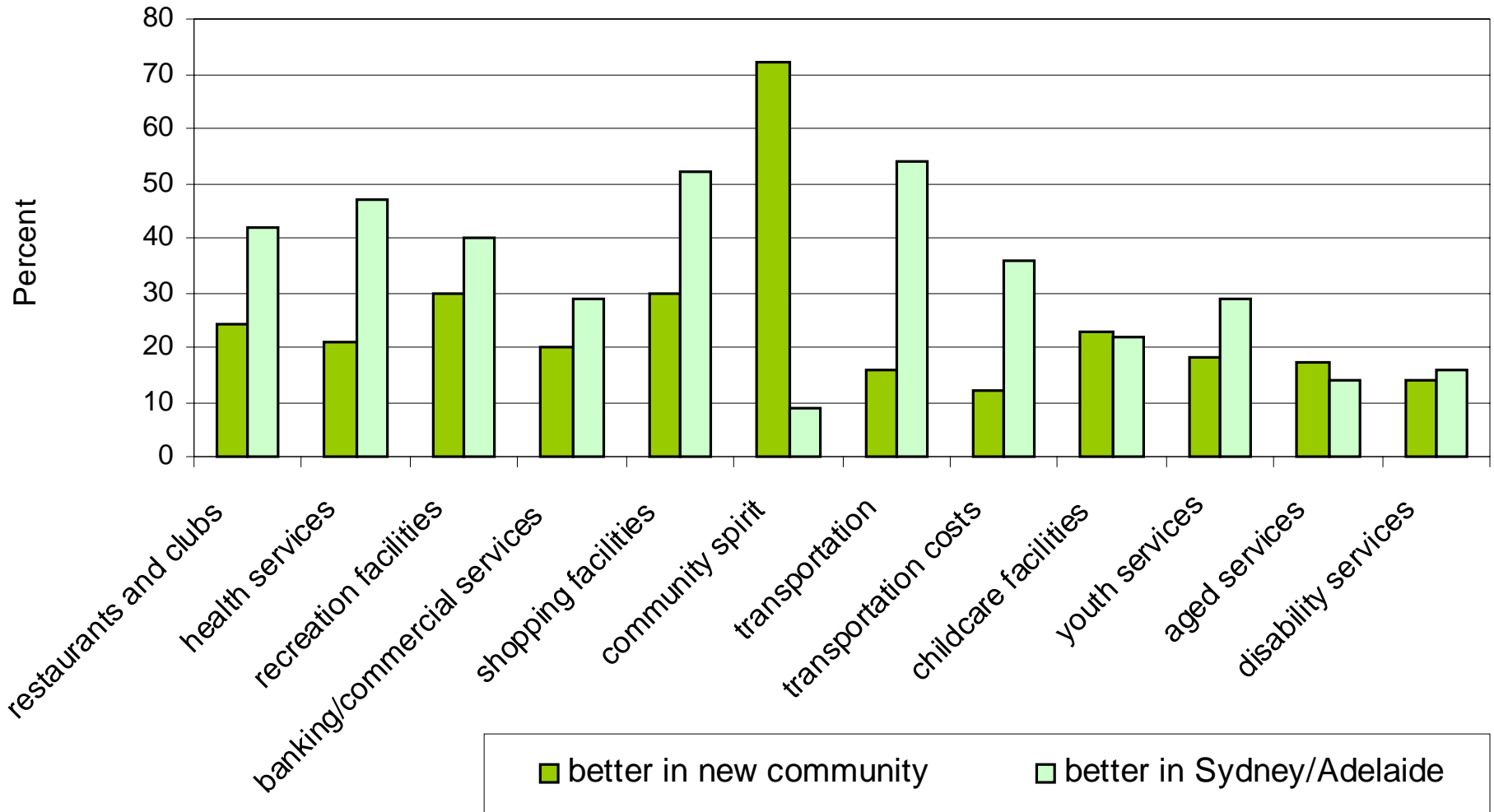
Unemployed: Place Satisfaction After Relocation



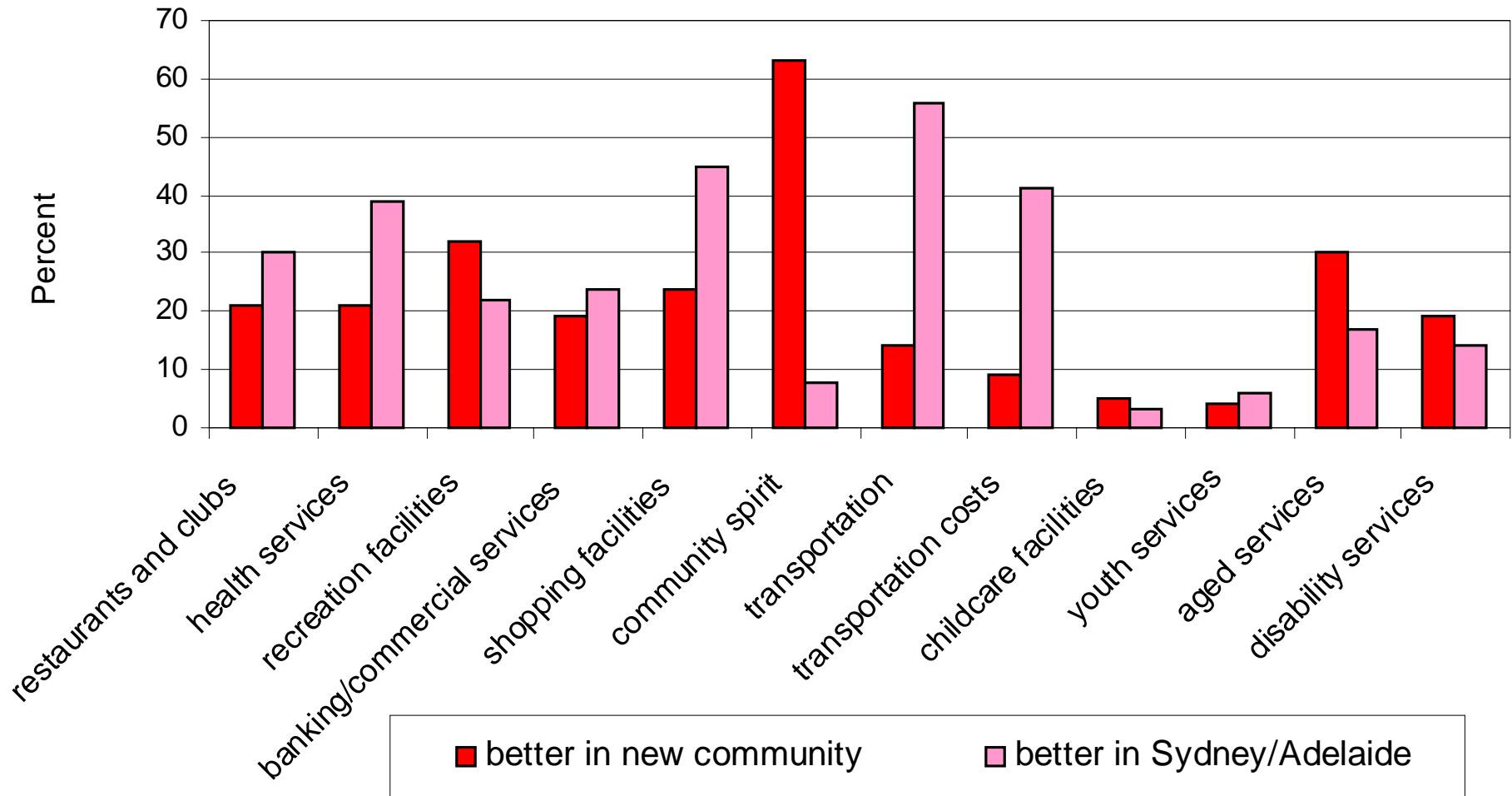
Disabled Place Satisfaction After Relocation



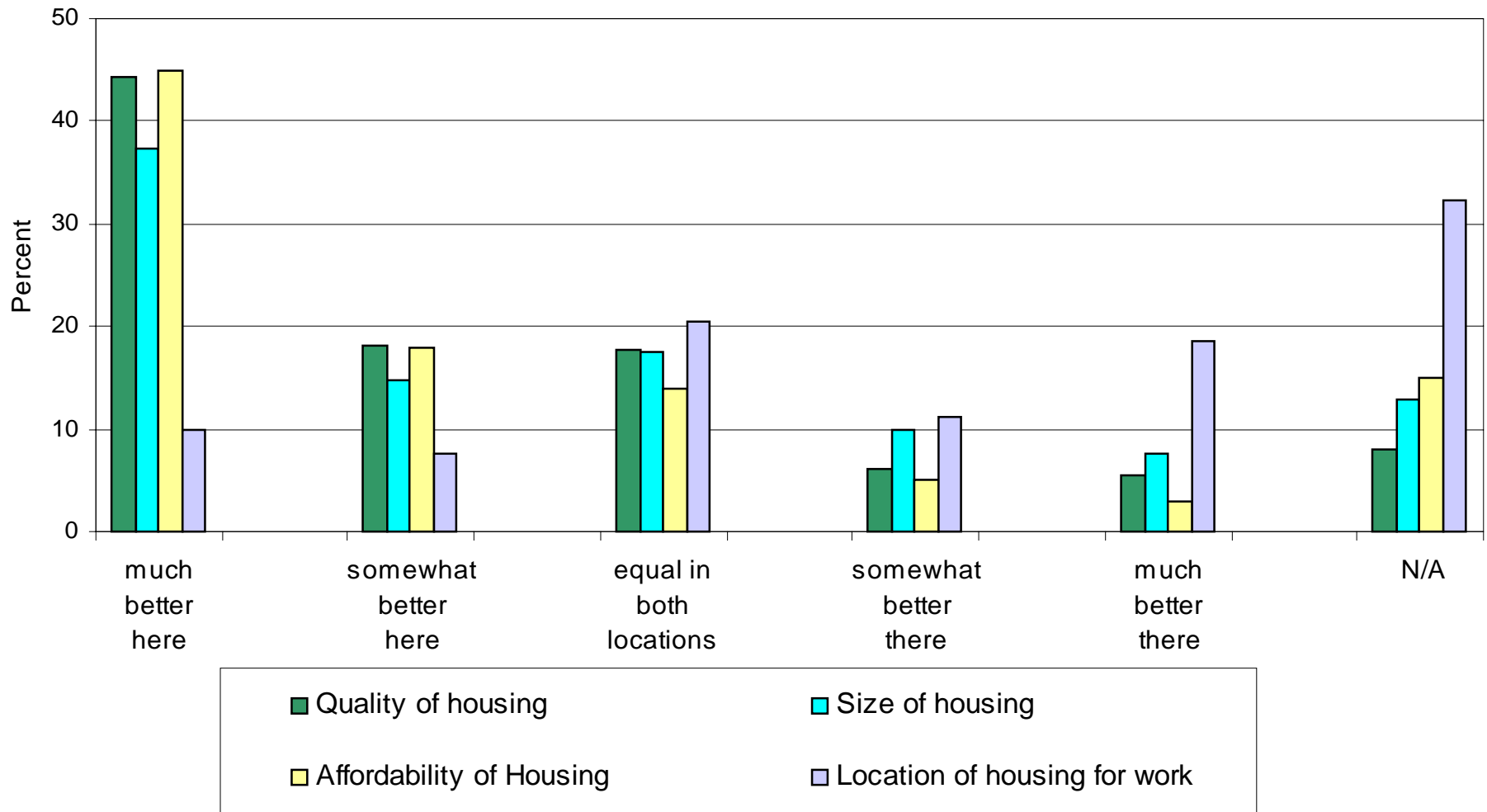
Single Parents Place Satisfaction After Relocation



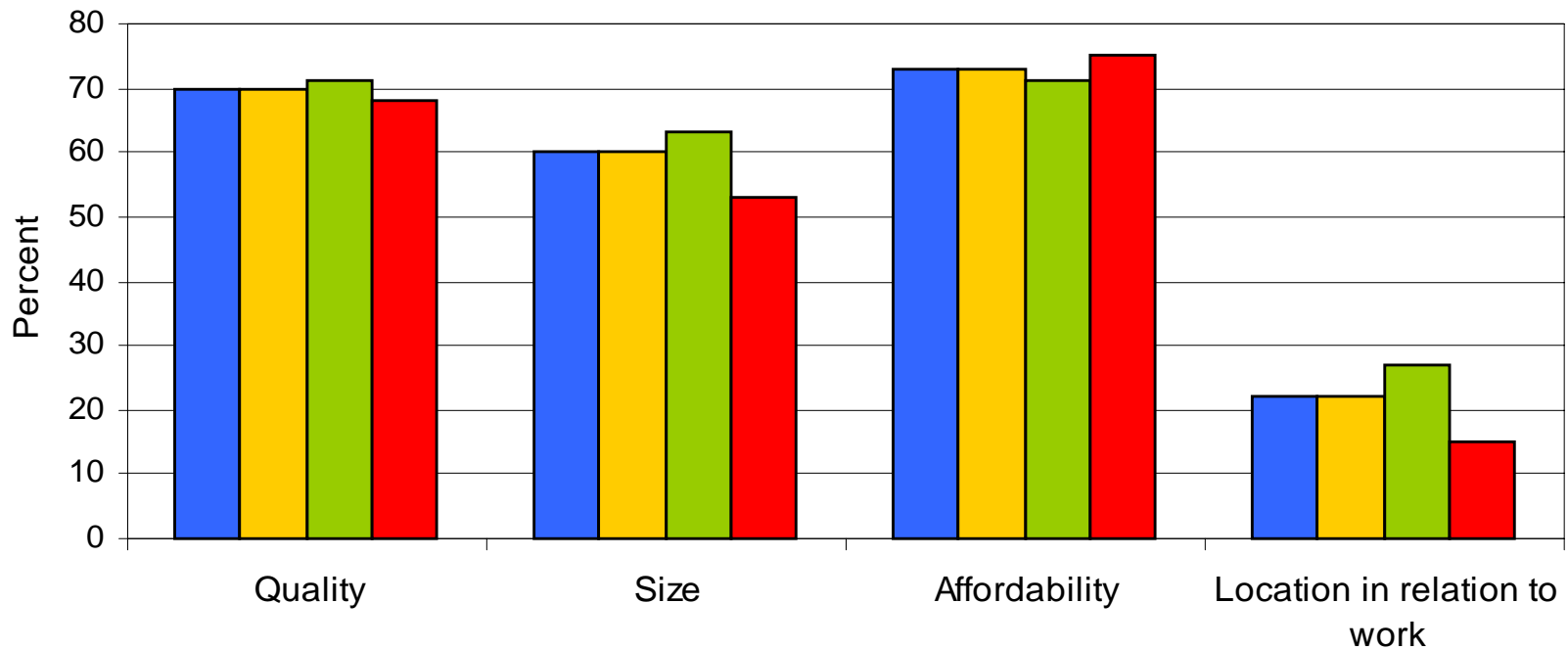
Aged Pension Place Satisfaction After Relocation



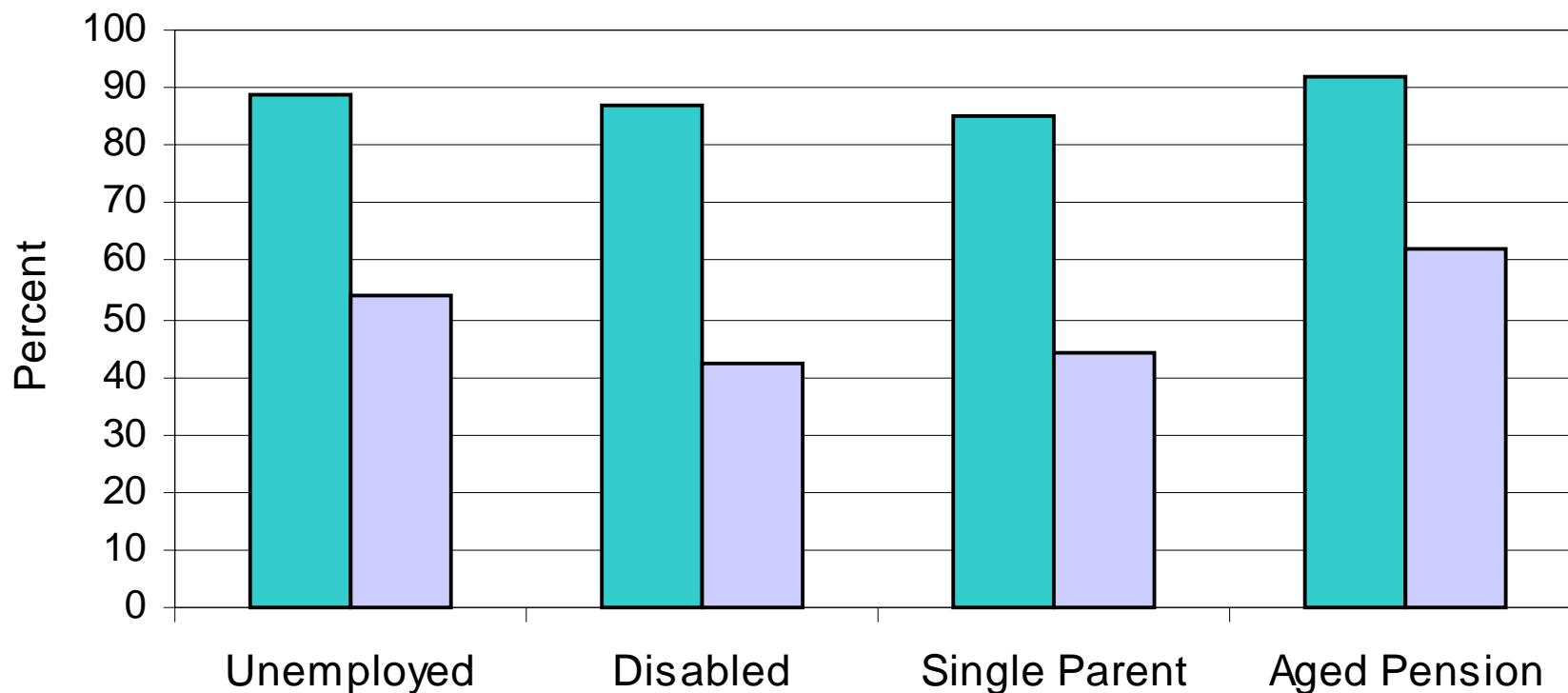
Housing Satisfaction Indicators Post Relocation: Total IS Recipients



Housing Satisfaction Indicators Post Relocation: I-S Type



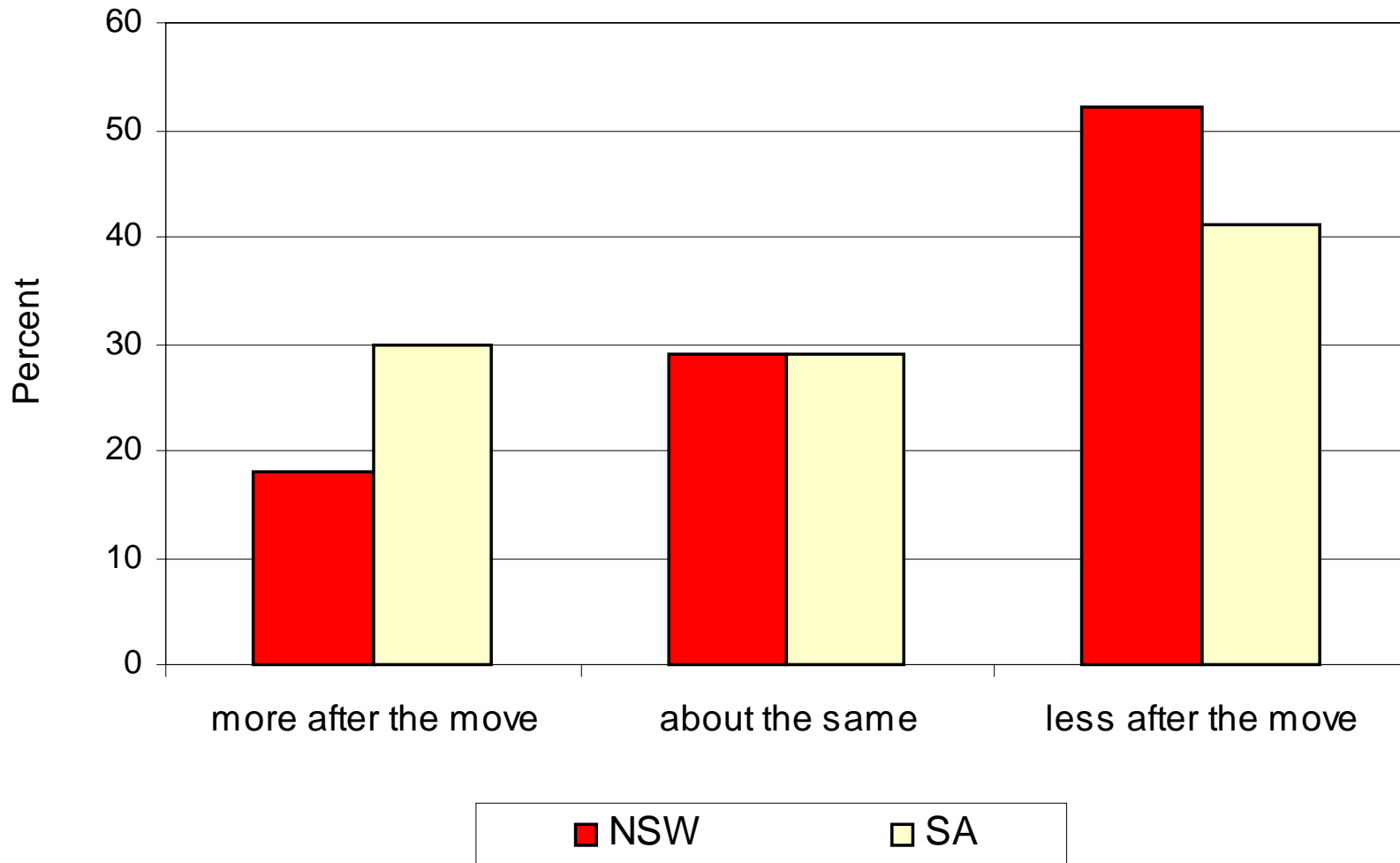
Community Satisfaction Ratings Before and After Moving: Total I-S Recipients



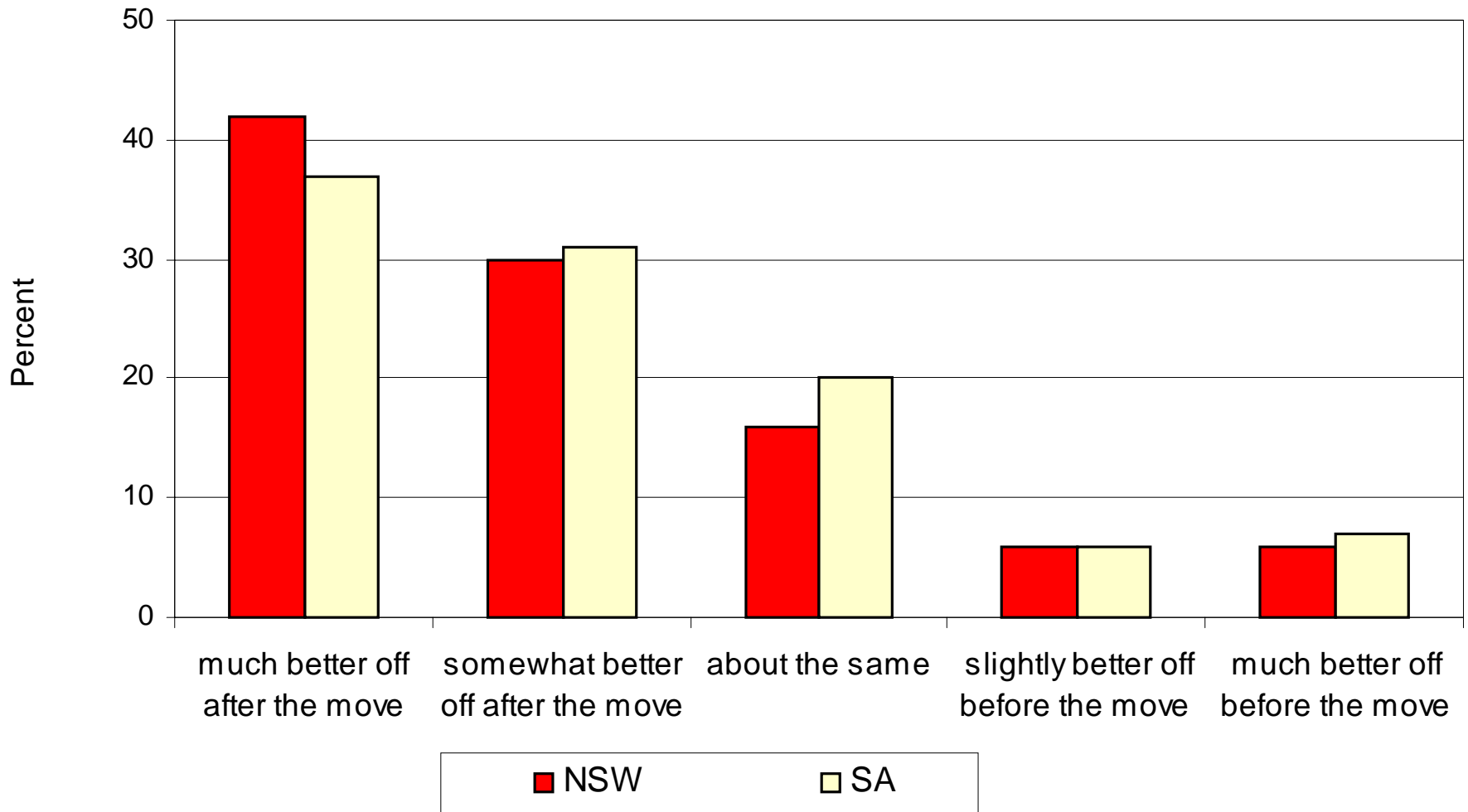
■ New community good + very good

■ Sydney/Adelaide good + very good

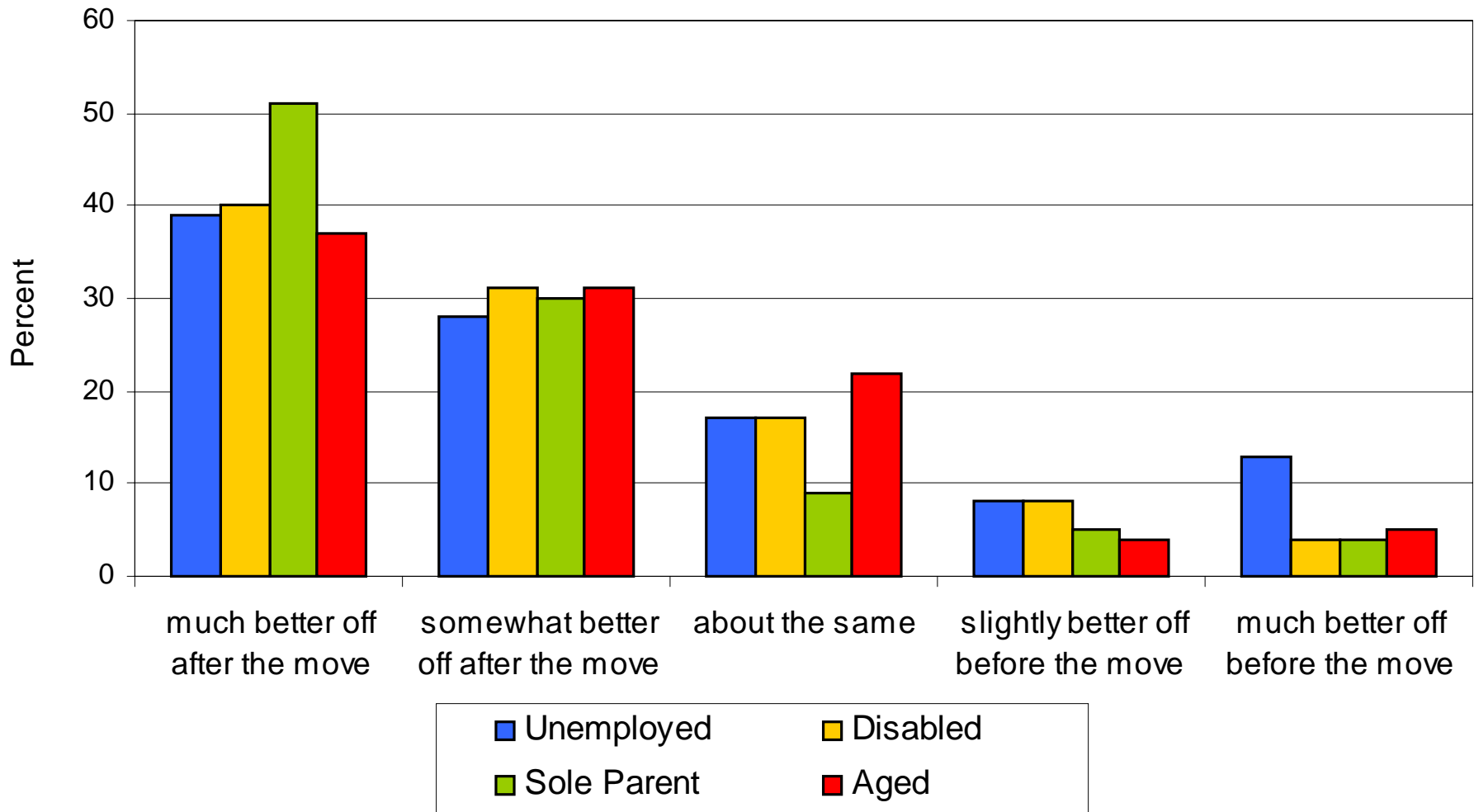
Amount Spent on Housing Post Move by State: Total I-S Recipients



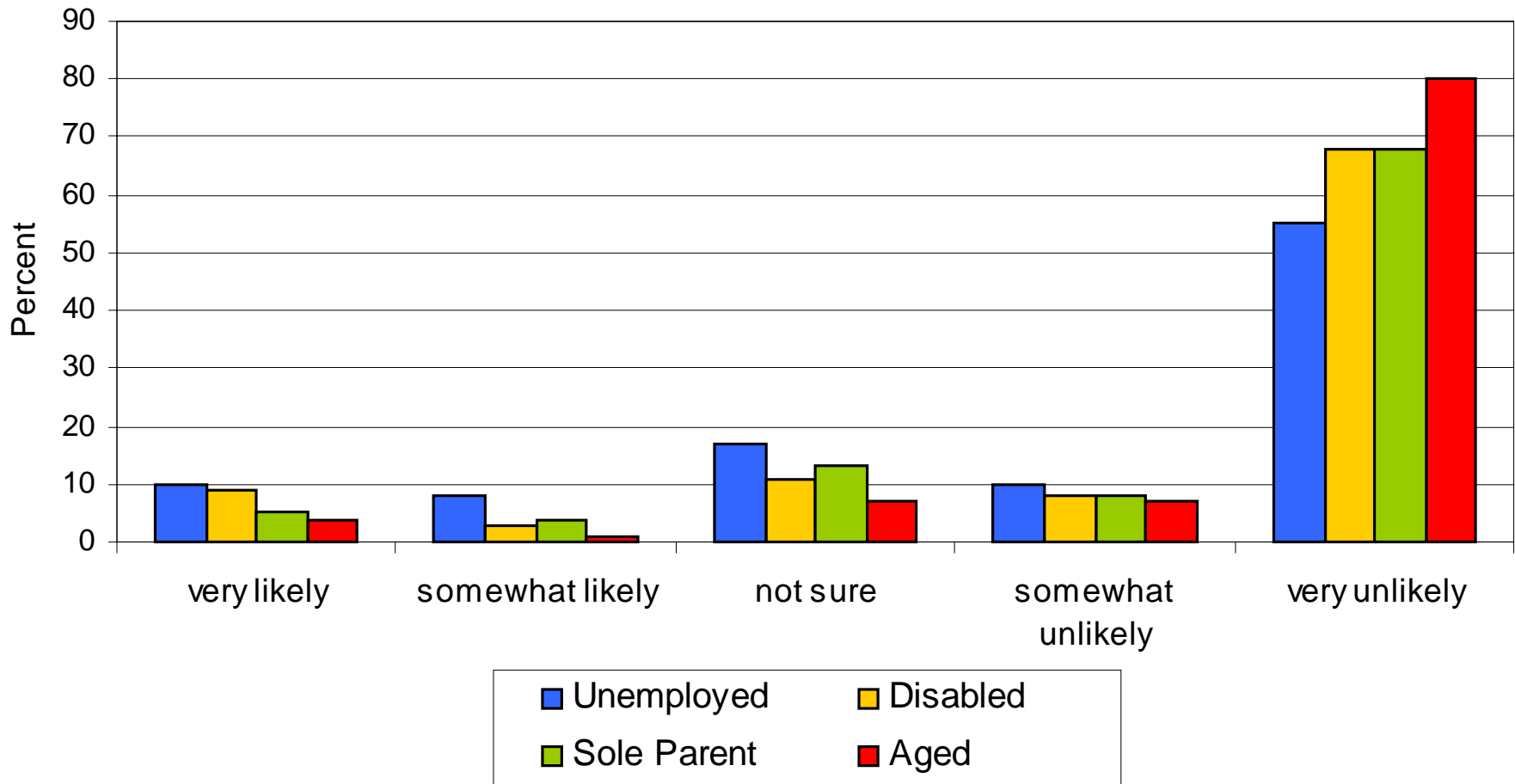
Relative Welfare Post Move by State: Total I-S Recipients



Relative Welfare Post Move by I-S Recipient Type



Likelihood of Moving Back to Sydney/Adelaide



Conclusions

- Housing affordability the single major relocation factor but lifestyle factors very influential too.
- Primary negatives are reduced access to commercial and government services and jobs.
- Marked increase in overall lifestyle and place satisfaction, housing affordability and quality.
- Net welfare markedly higher for most with unemployed and retirees outliers on low and high ends of spectrum respectively.

Conclusions

- **Likelihood of return to metropolis very low**

cf LDS pattern → either most in-movers to city are long term residents of non-metro, or else survey respondents have not had time to adjust to local realities

- **NSW/SA contrasts consistent with presumptions about relative significance of housing costs**